

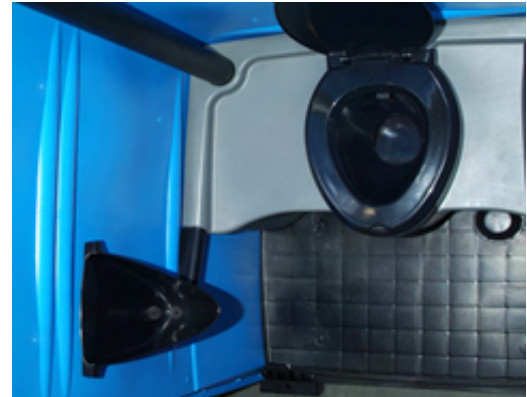


Toll free: 866 873 7796
Visit us: www.armal.us

Recirculating Kit

The Recirculating Flush provides a more pleasant experience to the end user. It uses a filter and foot pump design that screens deodorizer from the holding tank to remove solid waste from a counter-weighted plate that obscures entry into the holding tank. It is very hygienic, and deodorizer will not come in contact with the user. The user activates the pump with their foot to complete the cycle.

The urinal is installed with this application.



Fresh Water Flush System

The Fresh Water Flush System offers users a more hygienic experience with a familiar, at-home feel. It operates similarly to a recirculating kit but cleans the waste plate using fresh water stored within a 22-gallon tank.

The urinal is not installed during assembly to make space for the freshwater tank.



Wave H2O

Introducing our new Wave H2O internal hand wash unit, designed with elegance and efficiency in mind. This unit features a recessed foot pump, allowing for easy operation without hand contact. The innovative threaded cap minimizes the risk of loss, ensuring that your water supply remains clean. Installation is simple, and the unit is engineered to fit seamlessly into most portable restrooms. With a generous capacity of 13.75 gallons (52 liters), the Wave H2O provides an ample water supply for all your hand-washing needs.

Height: 48.82" (124cm)

Width: 14.57" (37cm)

Length: 11.81" (30cm)

Fresh water Tank: 13.75 Gallons (52 lt.)

Weight: 14 lbs (6.5 kilos)



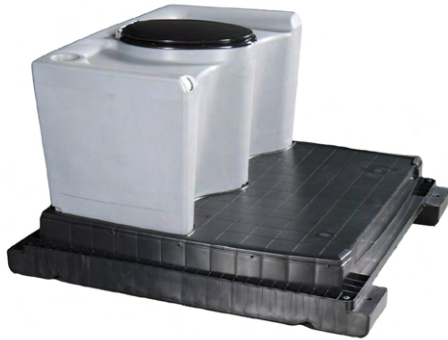
122 Hudson Industrial Drive -
Griffin, GA 30224 USA



Phone: +1 770 491 6410



Toll free: 866 873 7796
Visit us: www.armal.us



ROTOMOLDED WASTE TANK

Armal's Wave portable toilet now features a roto-molded tank option. This efficient 60-gallon tank includes a deep central sump for improved waste management and has a sloped top to prevent water pooling, making cleaning easier.

60 Gallon / 227 liters

ARMAL'S HOLDING TANK

The 250-Gallon Holding Tank has ribbed walls and is manufactured from strong durable plastic. There is 4 inlets/outlets for standard connections. The tank is natural in color to meet the requirements of certain states.

Dimensions (L/D/H): 48" x 72" x 18" Inches
Weight: 90 pounds



THE HANDY

Handy is Armal's mini-portable toilet that is ideal for all locations with limited space, from internal buildings to external sites that are difficult to access. Its lightweight (only 121 pounds), removable tank, and integrated wheels contribute to the uniqueness of this product.

Weight Empty - 122 pounds
Removable Tank capacity: 18 gallons
Dimensions (L/D/H) 31" x 37.50" x 77" Inches

FREE STANDING URINAL

The free-standing urinal reduces wait times at events, accommodating up to four users at once. It offers privacy with raised walls and stability with stainless steel bars. Features include a plastic seal for vacuum hose entry and strategic drainage ports.

Dimensions (L/D/H): 63" x 44" x 44" Inches
Weight: 89 pounds
Capacity: 102 gallons



122 Hudson Industrial Drive -
Griffin, GA 30224 USA



Phone: +1 770 491 6410