



AXS Assembly Instructions

Wheelchair Accessible Portable Restroom

- with
- Recirculating Flushing System/Hand Pump
- (rev. 01 dd 03/08/2022)



Index

1	INTRODUCTION	p. 3
1.1	Required Tools	p. 3
2	ASSEMBLY INSTRUCTIONS	p. 4
2.1	Wall Panels Assembly	p. 4
2.2	Roof Assembly	p. 12
2.3	Holding Tank with Hand Pump Assembly	p. 15
2.4	Door Assembly	p. 24
2.5	Standard Accessories Assembly	p. 27

1. INTRODUCTION

Armal portable restrooms must be assembled according to approved assembly procedures. Avoid variations in assembly procedures which could adversely affect product life and warranty. All references to front, left, right, and rear are looking at the door of the unit from the outside.

USEFUL TIPS: • Keep panels out of direct sunlight. • Don't open up all of your kit boxes. Open up only enough kit boxes to assemble the number of restrooms you are currently working on. **KEEP PARTS ORGANIZED.** • Staging parts will minimize assembly time.

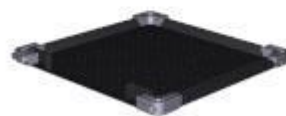
1.1 REQUIRED TOOLS

Allen Key	Star Screwdriver	Drill	Ø 89mm Tip for Hand Pump
			
Armal Key	Wrench	Regolable Key	Rivet Gun
			

2. ASSEMBLY INSTRUCTIONS

2.1 WALLS ASSEMBLY

Start from the floor



Insert the front panel on the floor



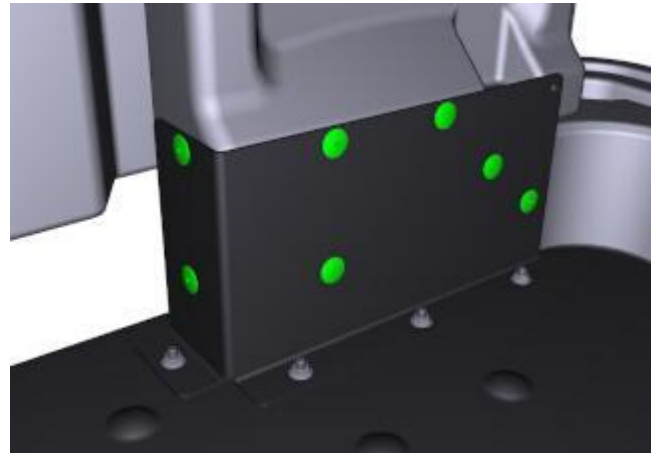
Drill the positions on the plate



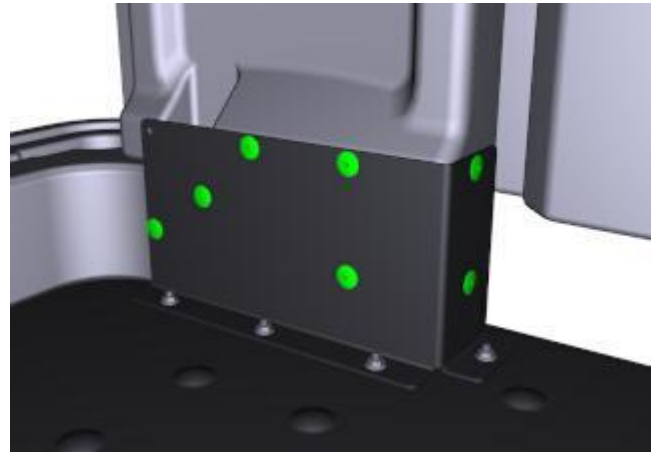
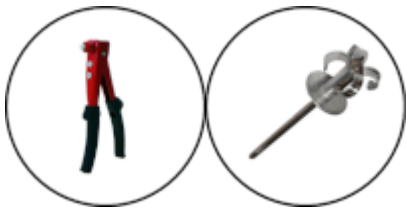
ø 5,25



Insert No. 7 rivets



Repeat the operations for the other plate



Insert the corner



Drill the corner positions



ø 5,25



Insert the rivets from the inside of the restroom



Insert the wall panel



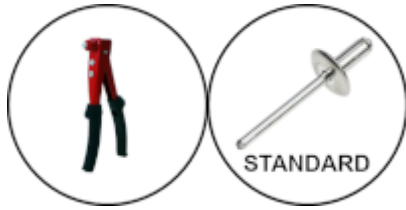
Drill the corner positions



ø 5,25



Insert the rivets from the outside of the restroom



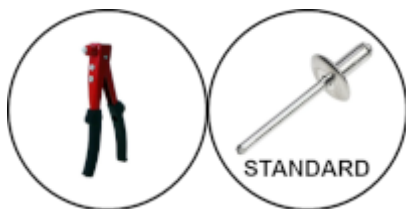
Insert corner



Drill the corner positions



Insert the rivets from the outside of the restroom



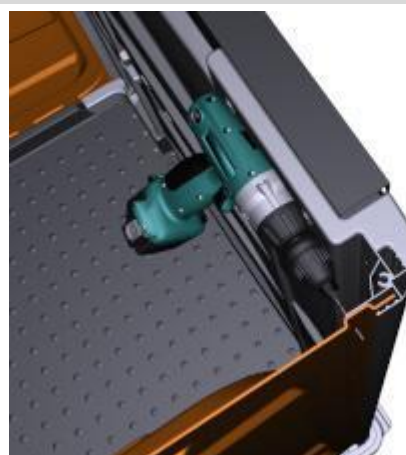
Repeat the operations for the other two panels and the joint corner



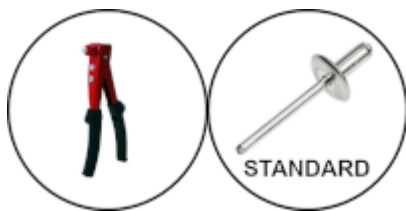
Insert the last corner



Drill the corner positions



Insert the rivets from the outside of the restroom



Drill the corner positions



Insert the rivets from the inside of the restroom



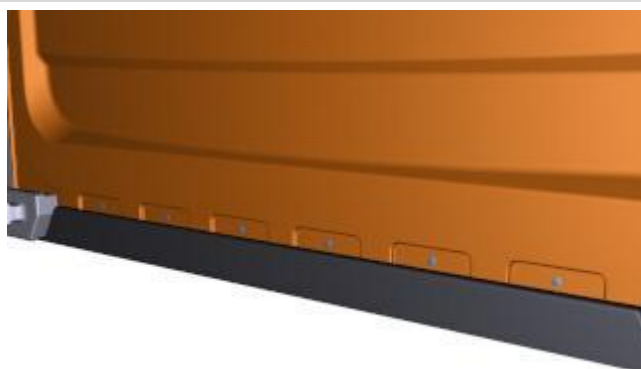
Drill the positions of the bottom wall panel



ø 5,25



Insert No. 6 rivets



Insert No. 6 rivets



2.2 ROOF ASSEMBLY

Place the roof



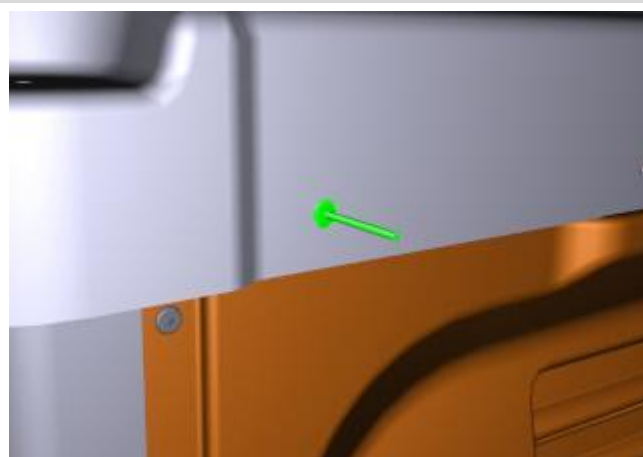
Drill the positions on the walls side



ø 5,25



Insert the rivets from the outside of the restroom



Insert the washers on the rivets from the inside of the restroom



Pull out the rivets from the outside of the restroom



Repeat the same steps for all sides of the wall panels



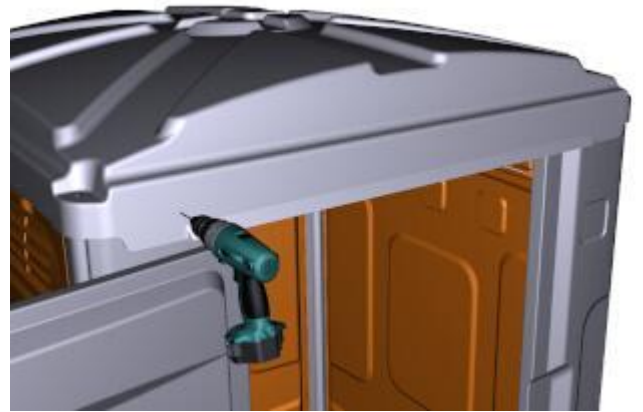
Repeat the same steps for all sides of the wall panels



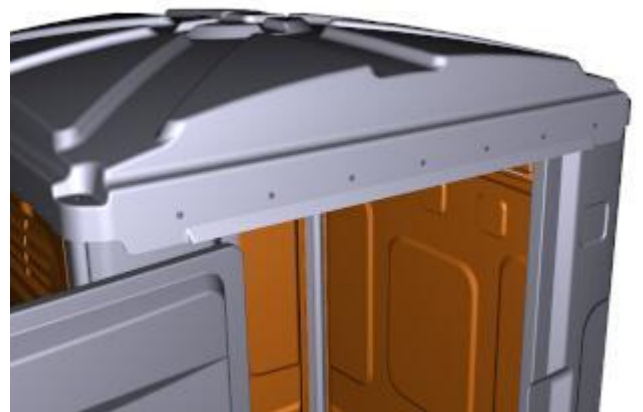
Drill the positions on the front side of the roof



ø 5,25

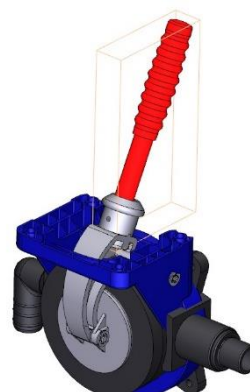


Insert the rivets



2.3 *HOLDING TANK WITH HAND PUMP ASSEMBLY*

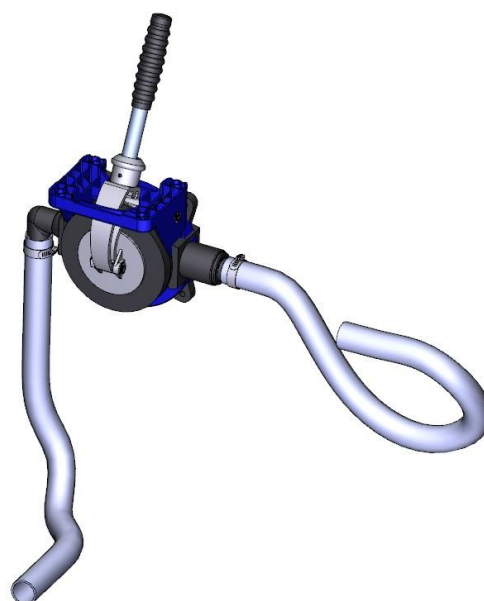
Mount the hand pump (see instructions in the pump leaflet)



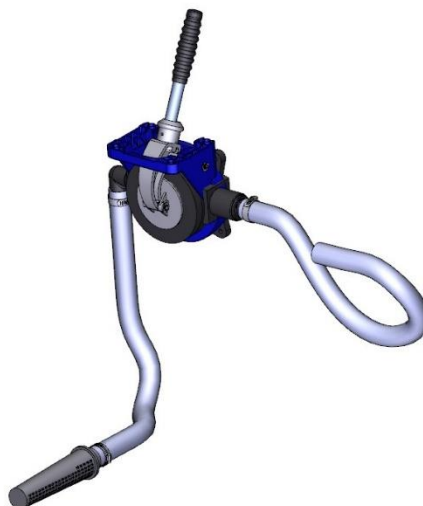
Mount the pipe in the pump outlet (length xx cm)



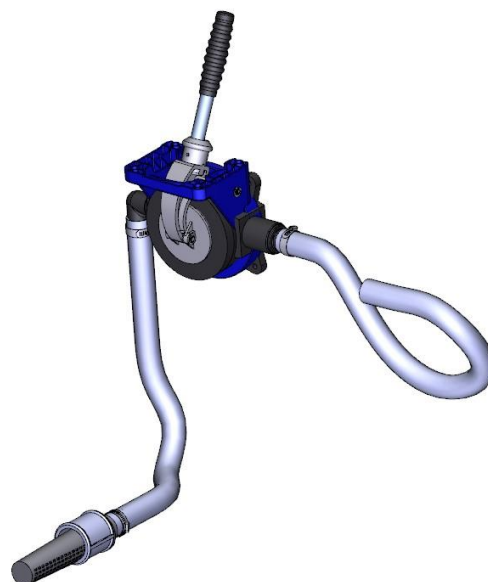
Mount the pipe in the pump inlet (length xx cm)



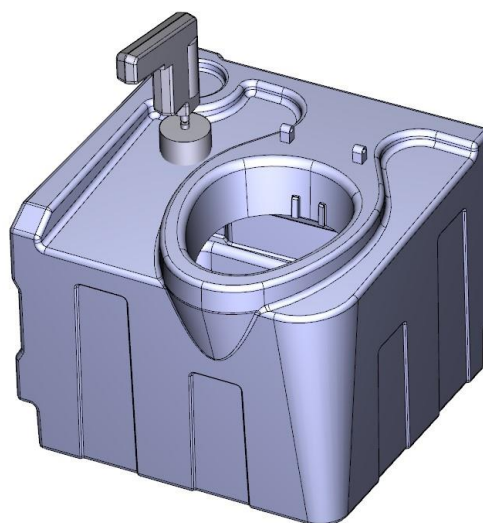
Mount the filter on the discharge pump pipe



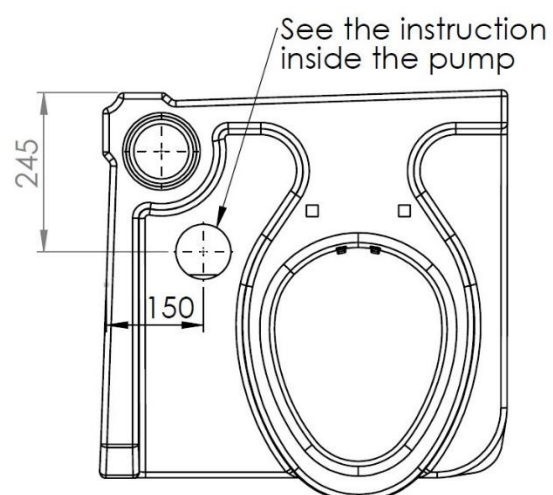
Mount the metal fitting on the filter



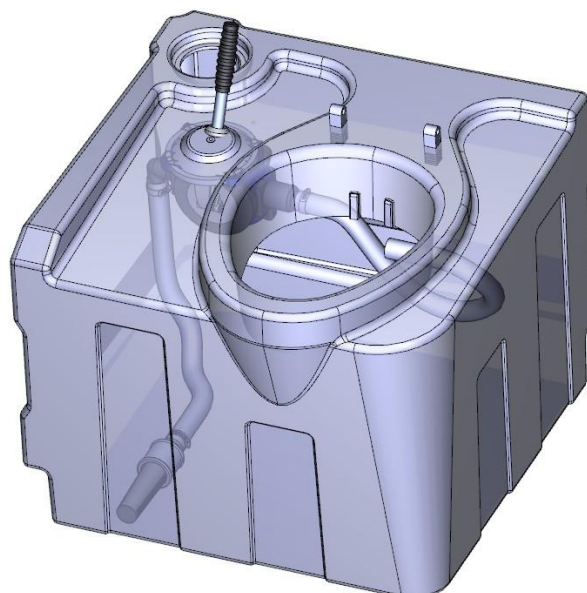
Prepare the tank and drill
(see dimensions in the next image)



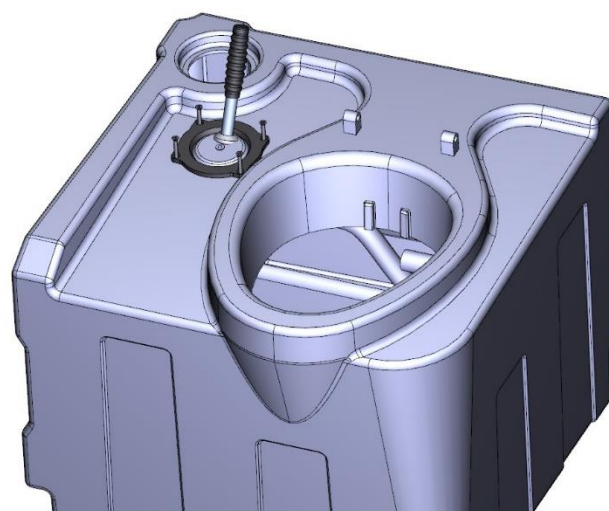
For the hole: see the instructions in the pump leaflet



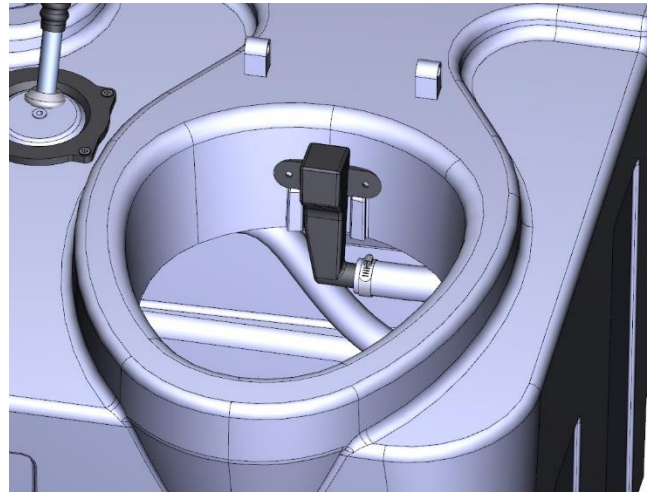
Insert the hand pump from inside the tank



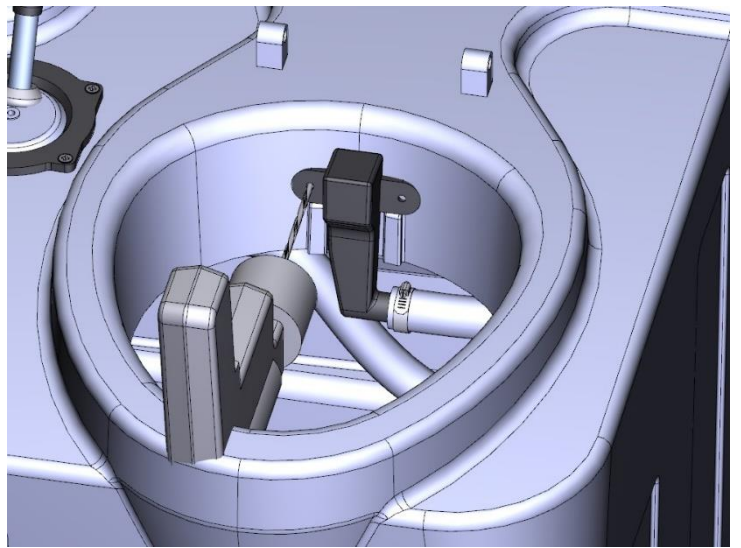
Mount the cover with No. 4 screw (inside the pump)



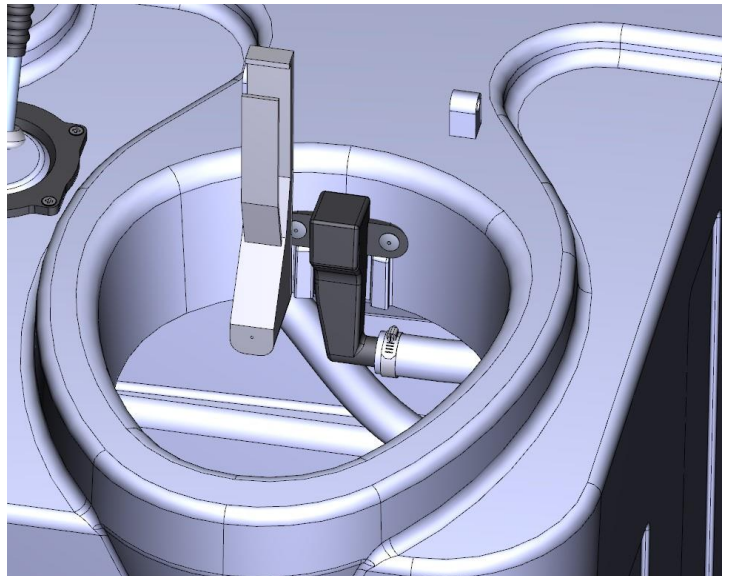
Mount the nozzle on the pipe



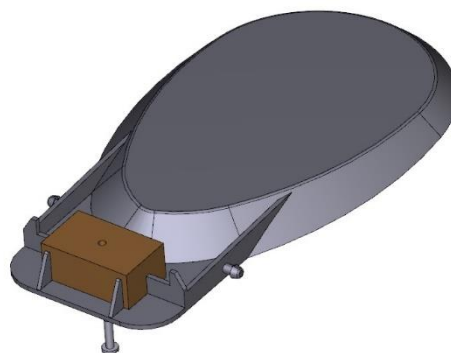
Place the nozzle and drill



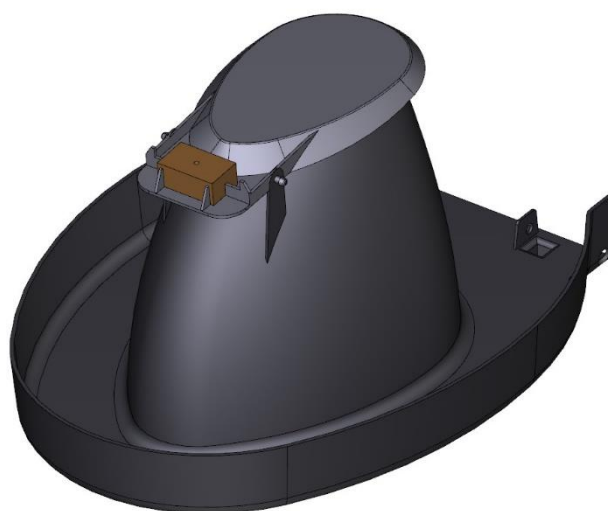
Fix the nozzle with No. 2 rivets



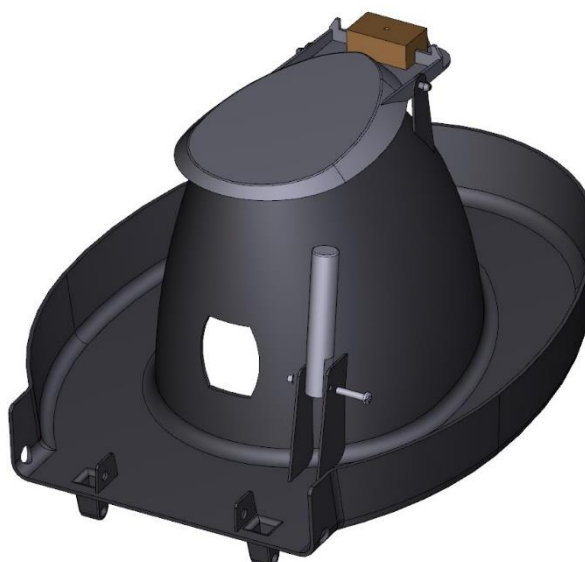
Mount the metal counterweight on the paddle with the screw



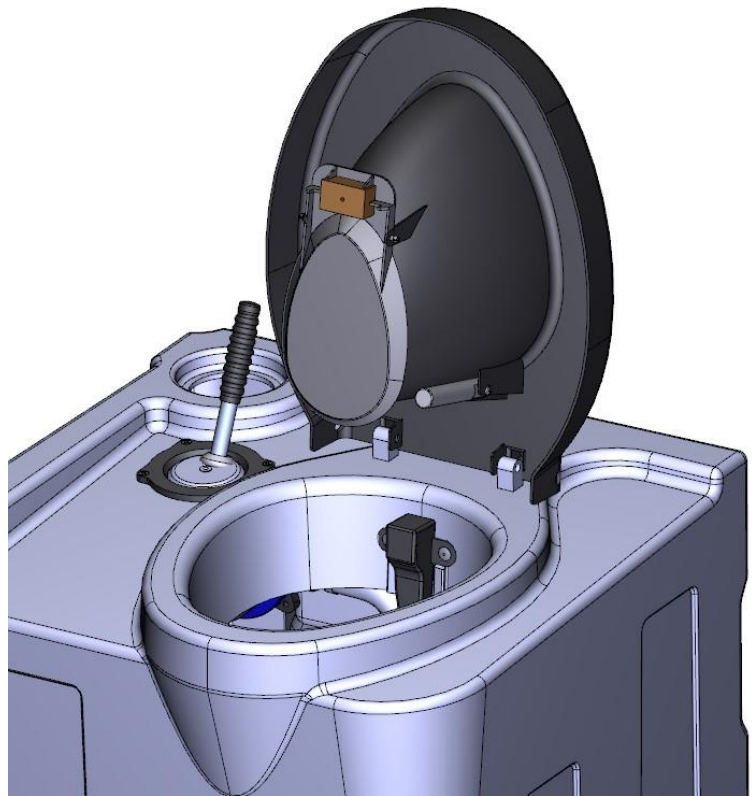
Mount the paddle on the bowl



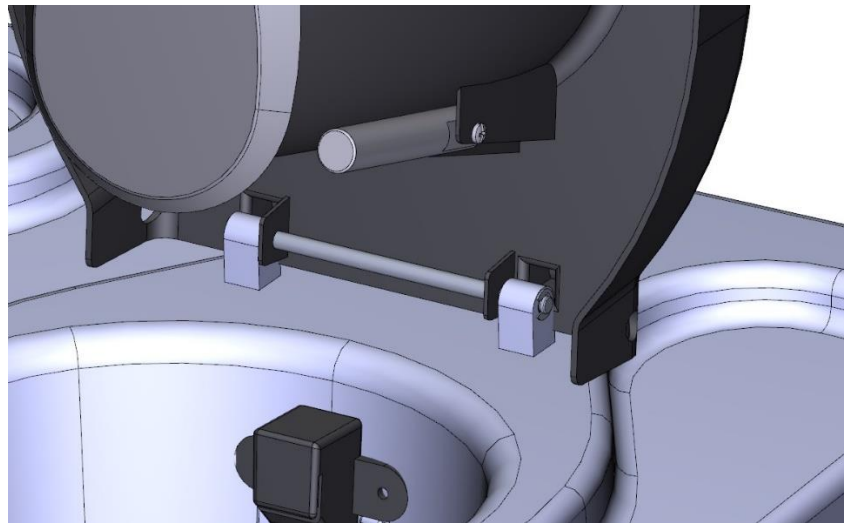
Mount the plastic bar on the bowl with screw and nut



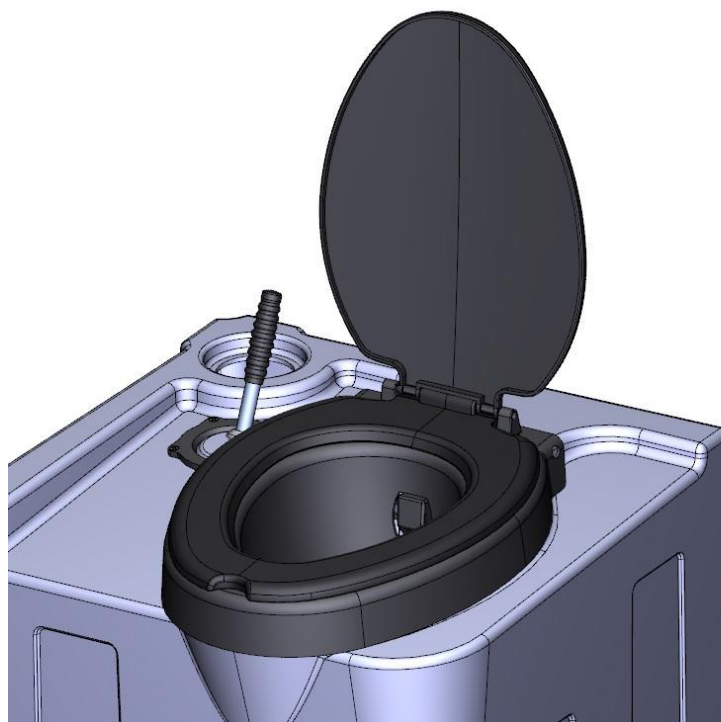
Place the bowl on the tank



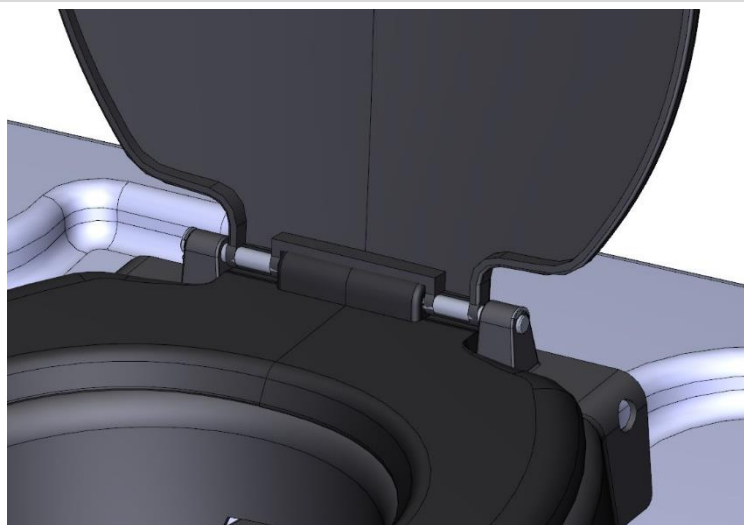
Assemble the bowl with the metal bar and the radial stop ring



Place the seat and the seat cover
on the bowl



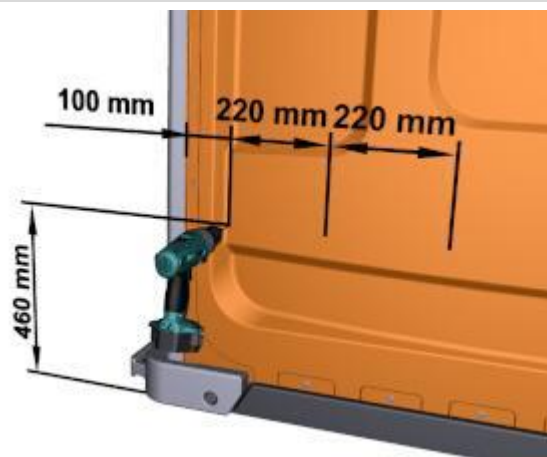
Assemble the metal bar and the
radial stop ring



Place the tank inside the restroom



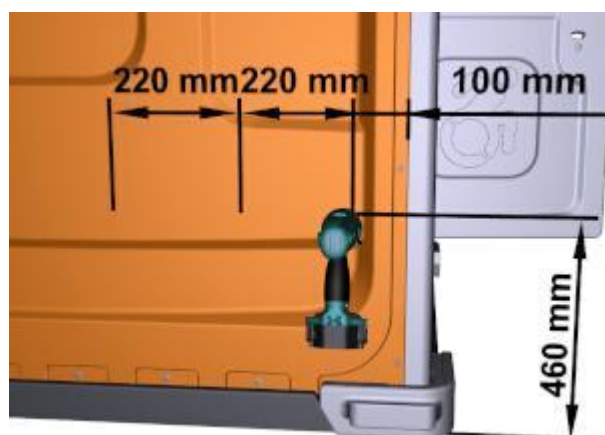
Drill the positions as shown on the left wall panel



Insert No. 3 rivets



Drill the positions as shown on the rear wall panel



Insert No. 3 rivets

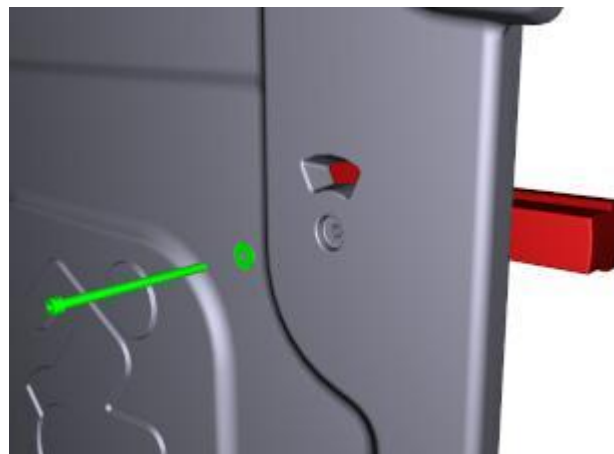


2.4 DOOR ASSEMBLY

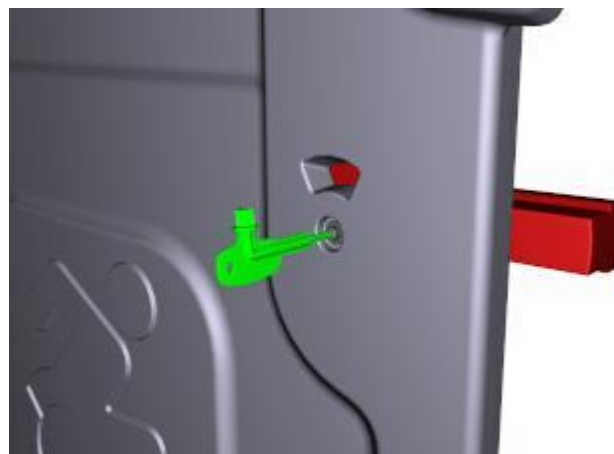
Insert the green/red indicator and the latch into the door



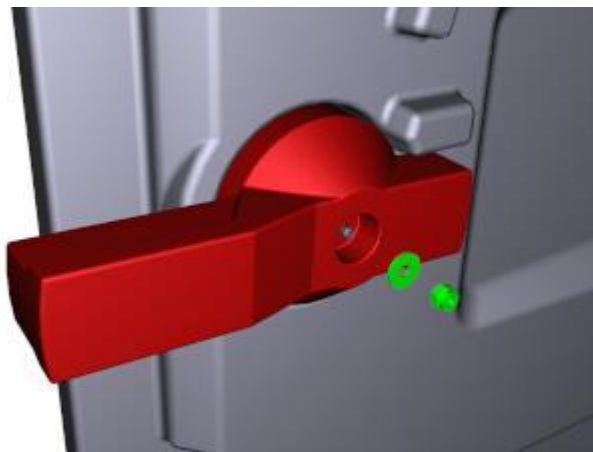
Insert the screw and the washer from the outside of the door



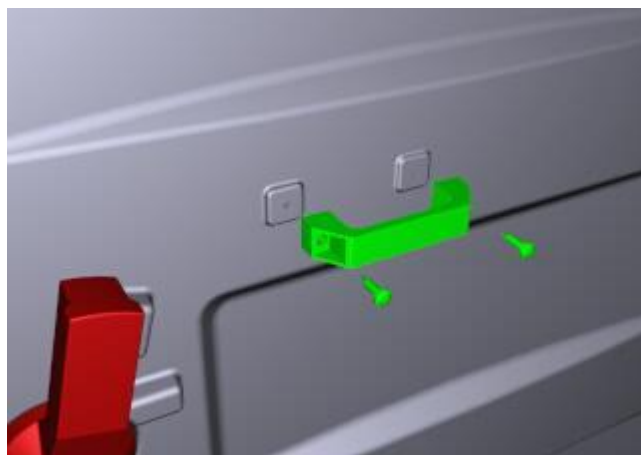
Hold the Armal key in place to lock the outer screw



Complete the assembly with a self-blocking nut and washer from the inside of the door



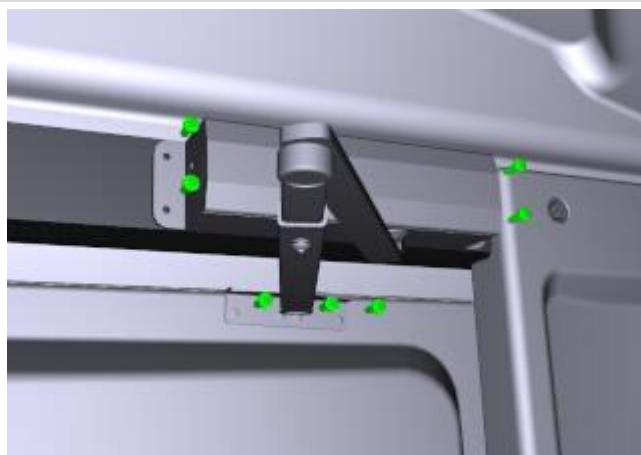
Insert the handle on the door and secure it with No. 2 screws



Close the door



Place the spring on the door frame and the door, and secure it with No. 7 screws



2.5 STANDARD ACCESSORIES ASSEMBLY

Insert the door lock metal plate in the specific position of the door



Drill in position



Secure it with No. 2 rivets



Insert the door lock metal plate in the specific position of the door frame



Drill in position



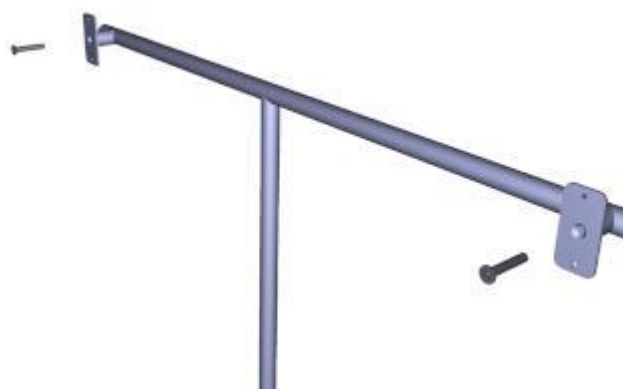
Insert No. 2 rivets



Install two plates on the horizontal handle poles



Secure the plates with No. 2 screws



Insert the corner plate



Secure the corner plate with a screw



Repeat the operation for the other handle



Insert the handle into the restroom



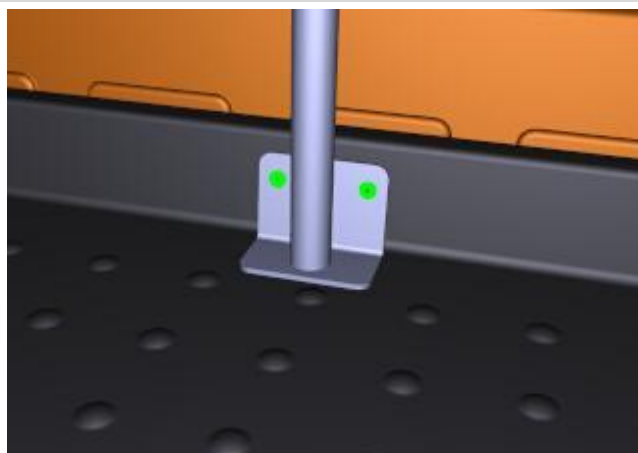
Drill in position



ø 5,25



Insert No. 2 rivets



Drill in position



ø 5,25



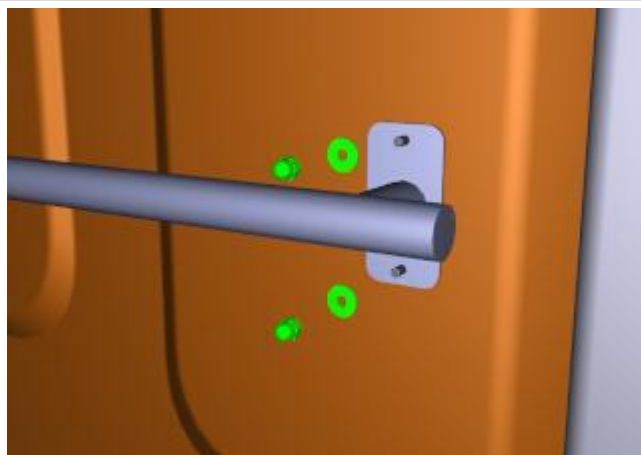
Insert No. 4 screws and washers



Secure the handle on the inside of the restroom with
No. 4 self-blocking nuts and washers



N° 10



Repeat the same operations for the other handle



Place the toilet paper holder



Drill four holes from the inside of the restroom



Insert No. 4 rivets from the outside of the restroom to secure the paper holder



Insert the ventilation pipe into the cover tank and roof



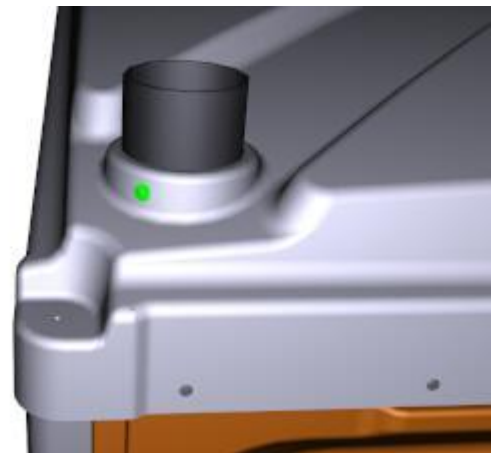
Drill the roof and the ventilation pipe



Ø 5,25



Insert the rivet



ARMAL S.p.A. Unipersonale

Società soggetta a direzione e coordinamento di Ylda S.p.A.

Via Fiorentina 109 – 50052 Certaldo (FI), Italy

Phone +39 0571 665305 – Fax +39 0571 661260

armal@armal.biz – info@cert.armal.biz - www.armal.biz
